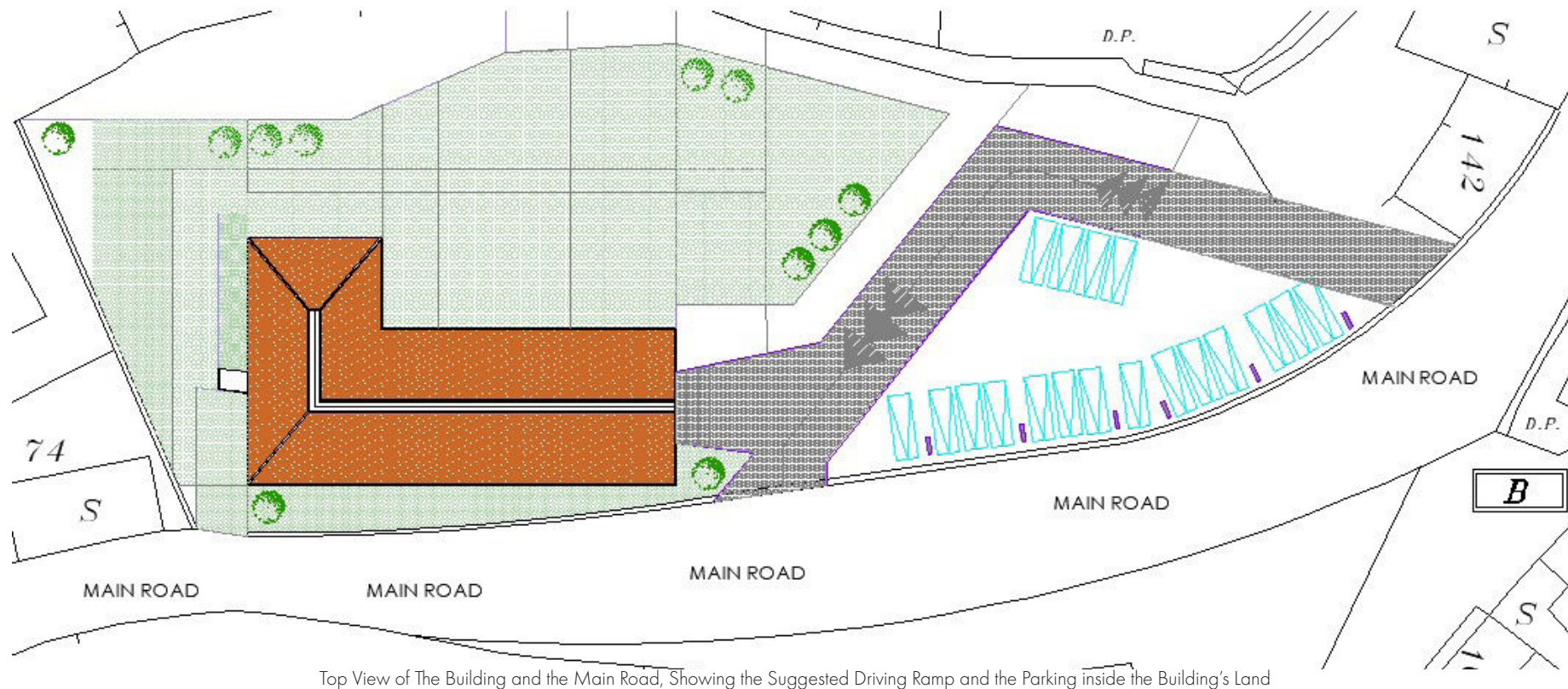


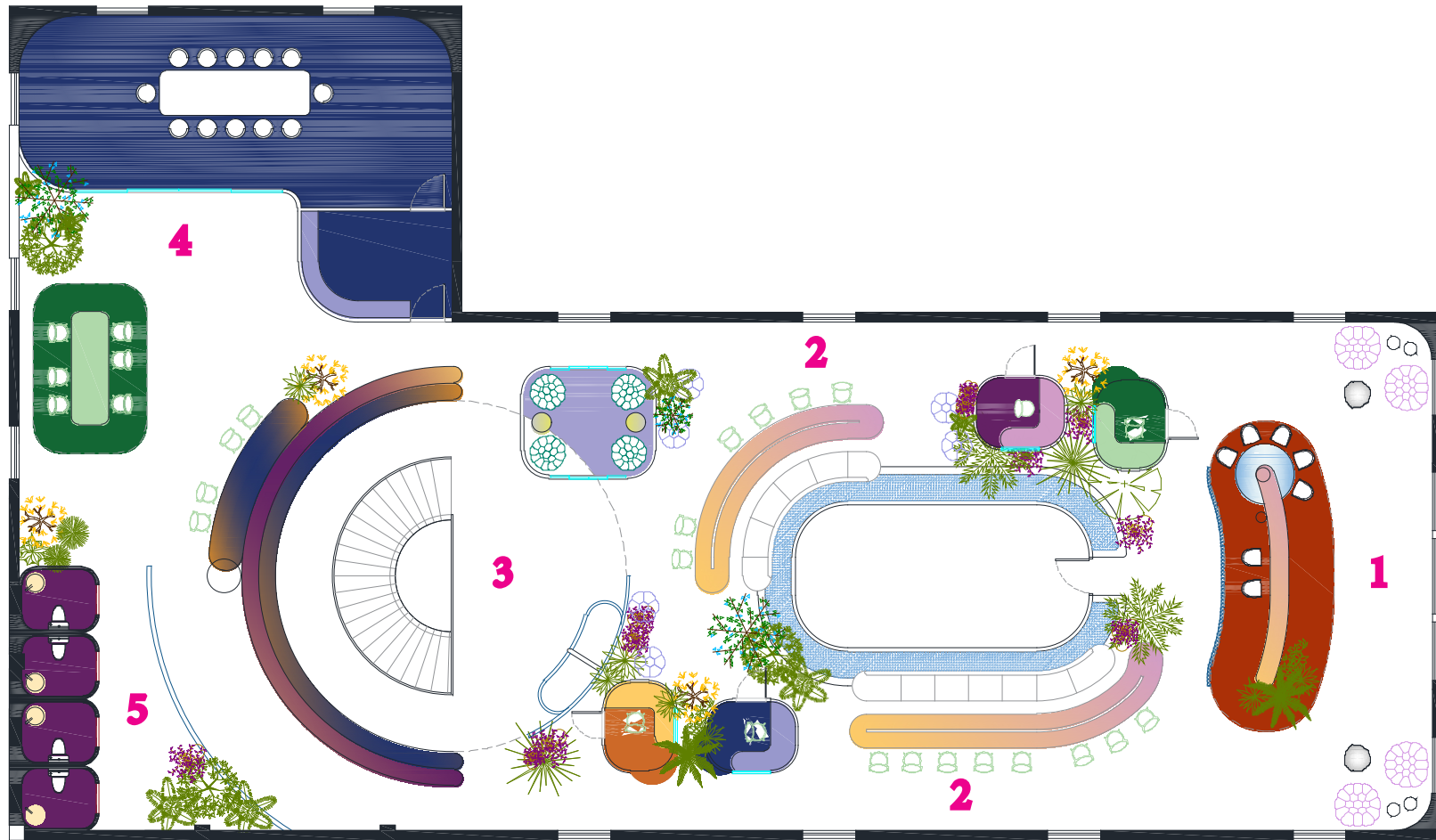
Design Development: Providing Access to First Floor



In order to achieve the access from First Floor, it is suggested to have a driveway ramp and parking in the land of the building, allowing people to park and enter from triple arched window Facade.

Moving the main co-working space functions to the first floor benefits from the tall windows which provide enough sunlight, while also maintains having the view to the lush greenery and the mountains.

Design Development: Zoning Layout



Final Layout - First Floor

The users are welcomed by a large entrance with a drinking table, and small lounges on the right and left corners. A translucent glass divider is set at the back of the entrance counter stimulating the curiosity of the new comers to explore. The users are taken into an open co-working space that includes shared desks, movable private pods and the meditation room. The circulation continue to a circular staircase surrounded by a material bank/library, separating the semi-quiet area, and the presentation and VR rooms.